



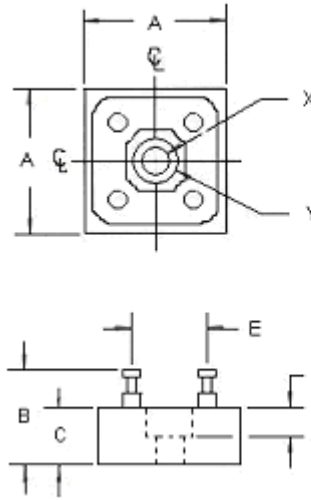
180 Lafayette Road  
 North Hampton, NH 03862-2448  
 PH: 603-964-3165  
 FX: 603-964-3168  
 WWW.PDEELECTRONICS.COM

## Rectifier Assemblies

Single Phase Full Wave Bridge  
 Standard Recovery  
 SCBH SERIES

- QUICK REFERENCE:**
- VR=50V - 600V
  - IF=10A - 12A
  - IR=2.0uA - 20.0uA
  - TRR=30nS - 2000nS

- FEATURES:**
- Low forward voltage drop
  - Low reverse leakage current
  - Aluminum case
  - Low thermal impedance
  - Insulated electrical connections



DIM	INCHES		NOTE
	MIN	MAX	
A	.735	.765	—
B	—	.50	—
C	—	.30	—
D	.135	.165	—
E	.38	.42	—
X	.132	.165	DIA
Y	.22	.25	DIA

NOTES:  
 POLARITY MARKED ON CASE

### ABSOLUTE MAXIMUM RATINGS

Device Type	Working Reverse Voltage (V <sub>RWM</sub> )	Average Rectifier Current (I <sub>F</sub> )						1 Cycle Surge Current I <sub>FSM</sub> tp=8.3mS		Repetitive Surge Current I <sub>FRM</sub>
		(@ case temperature)			(@ ambient temperature)			@25°C	@100°C	
		@55°C	@100°C	@125°C	@25°C	@55°C	@100°C			
		Volts	Amps	Amps	Amps	Amps	Amps	Amps	Amps	
SCBH2	200	12	9.0	8.5	4.0	3.0	1.7	150	100	50
SCBH4	400	12	9.0	8.5	4.0	3.0	1.7	150	100	50
SCBH6	600	12	9.0	8.5	4.0	3.0	1.7	150	100	50
SCBH05F	50	10	7.5	5.5	4.0	3.0	1.7	150	80	25
SCBH1F	100	10	7.5	5.5	4.0	3.0	1.7	150	80	25
SCBH2F	200	10	7.5	5.5	4.0	3.0	1.7	150	80	25
SCBH4F	400	10	7.5	5.5	4.0	3.0	1.7	150	80	25
SCBH6F	600	10	7.5	5.5	4.0	3.0	1.7	150	80	25
SCBH05FF	50	12	9.0	7.5	5.0	3.8	2.0	175	120	24
SCBH10FF	100	12	9.0	7.5	5.0	3.8	2.0	175	120	24
SCBH15FF	150	12	9.0	7.5	5.0	3.8	2.0	175	120	24



180 Lafayette Road  
 North Hampton, NH 03862-2448  
 PH: 603-964-3165  
 FX: 603-964-3168  
 WWW.PDEELECTRONICS.COM

**Rectifier Assemblies**  
 Single Phase Full Wave Bridge  
 Standard Recovery  
 SCBH SERIES

**ELECTRICAL CHARACTERISTICS**

Device Type	Maximum Reverse Leakage Current $I_R @ V_{RWM}$		Maximum Forward Voltage $V_F @ I_F$		Reverse Recovery Time <sup>1</sup> $T_{rr}$ @25°C
	@25°C	@100°C	Volts	Amps	
	µA	µA			nS
SCBH2	2.0	50	1.0	3.0	2000
SCBH4	2.0	50	1.0	3.0	2000
SCBH6	2.0	50	1.0	3.0	2000
SCBH05F	2.0	40	1.0	3.0	150
SCBH1F	2.0	40	1.0	3.0	150
SCBH2F	2.0	40	1.0	3.0	150
SCBH4F	2.0	40	1.0	3.0	150
SCBH6F	2.0	40	1.0	3.0	150
SCBH05FF	20	1000	0.97	5.0	30
SCBH10FF	20	1000	0.97	5.0	30
SCBH15FF	20	1000	0.97	5.0	30

<sup>1</sup> Measured on discrete devices prior to assembly. Conditions  $I_F=5A$ ,  $I_R=1A$ ,  $I_{rr}=25A$

**TEMPERATURE CHARACTERISTICS**

Operating & Storage Temp Range.....	-55°C TO +150°C
Thermal Impedance.....	3.30 °C/W Typical